



# WATERWISE GARDEN DESIGN

[waterwisegardendesign.com](http://waterwisegardendesign.com)

E-NEWSLETTER  
FALL 2009

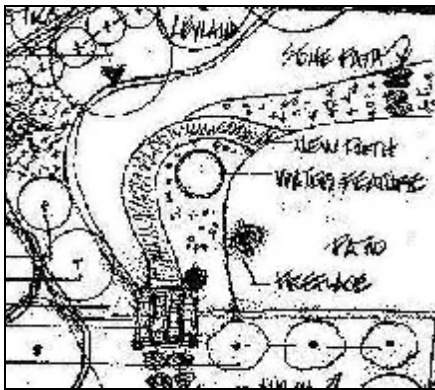
## GREETINGS

Welcome to the initial issue of our e-newsletter. WaterWise Garden Design is devoted to the thoughtful use and conservation of water and all natural resources. We believe the conservation of water is integral to the development of a healthily sustaining and aesthetically pleasing garden.

Check out our newly updated website at [www.waterwisegardendesign.com](http://www.waterwisegardendesign.com). The WaterWise Garden Design team plans to keep our website fresh and relevant for site visitors. We look forward to providing you with a full array of resources to be employed in the wise management of your landscape. Let us know how we are doing. Thanks!



## WATERWISE GARDEN DESIGN WORKSHOP



Sign up now for one of our WaterWise Garden Design [workshops](#). We plan to offer several Water Wise workshops at various levels of knowledge throughout the year.

Classes are currently scheduled for September 26, 2009 and October 10, 2009 at the JC Raulston Arboretum Education Building in Raleigh.

Check back with us at [www.waterwisegardendesign.com](http://www.waterwisegardendesign.com) for details and schedules of future workshops.

## GARDEN THOUGHTS

*I do pine for a little garden of my own, where I could raise an occasional can of tomatoes.*

John Kendrick Bangs  
*Coffee and Repartee*



## **EDITORS NOTE**

Late summer weather can be brutal in the Carolina piedmont. We depend on tropical storms for significant rainfall this time of year. Yet a good soaking from one of these systems just does not balance the devastation of a hurricane. When we don't get this rainfall to nurture our gardens and fill our reservoirs – we water, water, water and water some more. And then community restrictions are implemented.

Why not establish your own set of rules and restrictions before you are forced to do so. New plants have always had bigger thirst than established plants. Plant in the fall and conserve water.

Plant selection depends on many factors. Just be sure to always have knowledge of the plant you purchase before you take it home with you. We typically choose plants for their aesthetic qualifications, but “you will never know your plant until you know its roots and you will never grow a plant unless you know what makes it happy.”\*

\*This is a quote from Dr. B.W. Wells, formerly of Chapel Hill, NC as passed along to Margaret Reid, formerly of Raleigh, NC.

## **Hoyt Bangs**

